

Automatic Fish Feeder

Description:

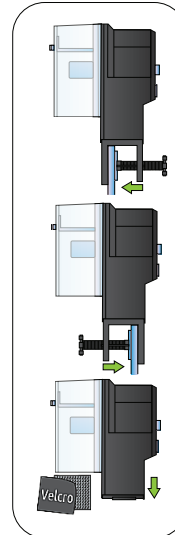
Automatic feeder to feed your aquarium fish once or twice a day, even when you are not at home. Easy to use and suitable for pellets and flakes.



A. Start first feeding
B. Feeding per 12 or 24 hours
C. Feed quantity setting
D. Feed container
E. Battery compartment (2xAA)
(Batteries not included / Do not use rechargeable batteries!)

Small feed container for micropellets and flakes.

Large feed container for larger fish, pellets up to 3mm



MANUAL SWITCH
GEAR SWITCH
LONG FEED BUCKET
LONG SCREW
FIXATION CLAMP
SHORT SCREW
FIXATION CLAMP MOVING BOLT
ADJUSTMENT SWITCH
SHORT FEED BUCKET

Instructions:

1.

BATTERY COVER

Take off the feeder clamp. Open the battery cover and install a pair of AA batteries according to the direction mark. Close the battery cover. *(When the batteries are installed, the time will start)*

2.

a b c

FOLLOW THE ARROW MARK TO SET UP

Take off the feed bucket and open it. Put ordinary fish food or granules into the bucket then close it. Install it on the feeder with opening facing up.

3.

Fix the feeder onto the tank. Ensure it is parallel with the tank.

4.

ADJUSTMENT SWITCH

Adjust the active switch on the bucket until the feeding quantity meets your needs.

5.

GEAR SWITCH

Two options for feed time: 12H & 24H. If set 12H, feed twice per day; If set 24H, feed once per day. Two methods to change the start time of feeding. **Option A:** Take out the battery & reset; **Option B:** Switch the 12H/24H button. All timing will be cleared and will restart.

Manual Feeding

Manual feed by pressing the manual switch.

Cautions:

1. Electronic circuit inside the feeder. Not to be submerged in water.
2. Replace the batteries every 6 months.

The clamp is fixed on the fish feeder, tighten the moving bolt to the fish tank.